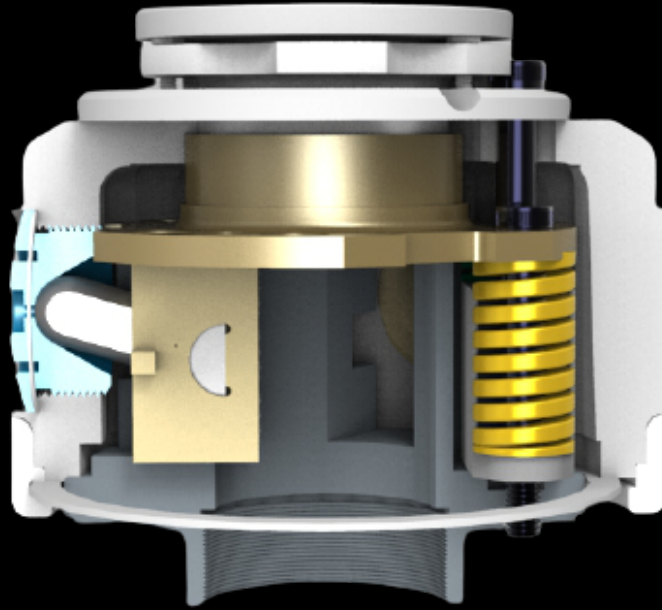


**"The Only Chuck that grips any rod size  
without having to change the jaws"**

## **LINK CHUCK**

# **Hydracore's Unique Chuck**



### **MINIMUM FRICTION AND MAXIMUM CHUCK FORCE**

Most other chucks on the market use a taper mechanism to transfer spring force to the chuck jaws. This mechanism is inefficient. Almost, half the force of the springs is wasted overcoming sliding friction.

Hydracore's unique Link Chuck uses a link mechanism to transfer force efficiently to the chuck jaws. This mechanism has no sliding friction, it also works with a varying geometry rather than at a fixed angle. This increased efficiency results in more grip and reduced wear of the chuck body.

### **GRIP ANY ROD SIZE WITOUT CHANGING THE JAWS**

All other Chucks require you to change the Jaws to match each size of the Drill Rod. Each Jaw change takes at least 20 minutes of your time which is lost production time.

Hydracore's Link Chuck uses the same set of jaws when drilling with A, B, N & H size Drill Rods. Saved Time = Saved Money for our Customers!

**HYDRACORE**  
D R I L L S

**"Making Drilling Easier Since 1975"**

**WWW.HYDRACORE.COM | INFO@HYDRACORE.COM**

